



US00D723713S

(12) **United States Design Patent**  
**Shrestha et al.**

(10) **Patent No.:** **US D723,713 S**

(45) **Date of Patent:** **\*\* Mar. 3, 2015**

(54) **BUNGALOW**

(71) Applicants: **Simal Shrestha**, Hudson, NY (US);  
**Michael Molinelli**, Briarcliff Manor, NY (US)

(72) Inventors: **Simal Shrestha**, Hudson, NY (US);  
**Michael Molinelli**, Briarcliff Manor, NY (US)

(73) Assignees: **ST Bungalow LLC**, Briarcliff Manor, NY (US); **Simal Shrestha**, Hudson, NY (US); **Michael Molinelli**, Briarcliff Manor, NY (US)

(\*\*) Term: **14 Years**

(21) Appl. No.: **29/444,801**

(22) Filed: **Feb. 4, 2013**

(51) **LOC (10) Cl.** ..... **25-03**

(52) **U.S. Cl.**  
USPC ..... **D25/33**

(58) **Field of Classification Search**  
USPC ..... D25/1-35; 52/36.1, 79.1-79.5, 169.6,  
52/80.1, 80.2, 90.1, 91.1, 91.2, 91.3,  
52/92.1-92.3, 93.1, 93.2; D21/458  
See application file for complete search history.

(56) **References Cited**

U.S. PATENT DOCUMENTS

D201,674 S \* 7/1965 Slaughter ..... D25/22

D209,576 S \* 12/1967 Wah et al. .... D25/22  
D235,337 S \* 6/1975 Mize et al. .... D25/32  
D275,893 S \* 10/1984 Duggar ..... D25/33  
D335,002 S \* 4/1993 Read et al. .... D30/108  
D338,073 S \* 8/1993 Wall ..... D25/56  
D458,688 S \* 6/2002 Phifer ..... D25/4  
D545,976 S \* 7/2007 Jackson et al. .... D25/16  
D593,208 S \* 5/2009 Ausich et al. .... D25/4  
2002/0170240 A1\* 11/2002 Thompson ..... 52/36.1  
2006/0185260 A1\* 8/2006 Dehart ..... 52/36.1

\* cited by examiner

*Primary Examiner* — Garth Rademaker

*Assistant Examiner* — Samantha Q Lawrence

(74) *Attorney, Agent, or Firm* — Keith D. Nowak; Carter Ledyard & Milburn LLP

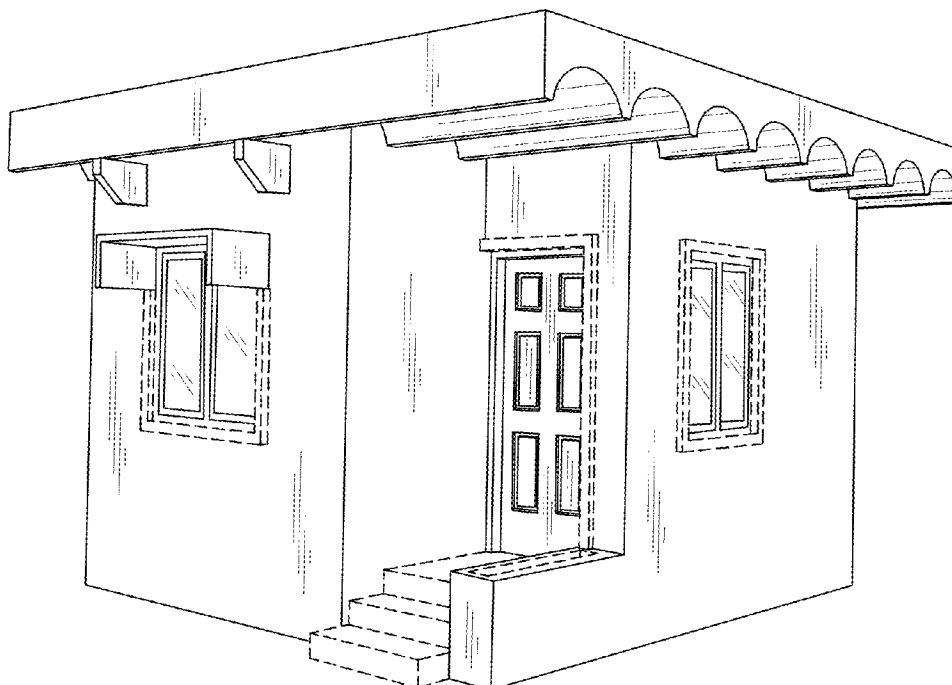
(57) **CLAIM**

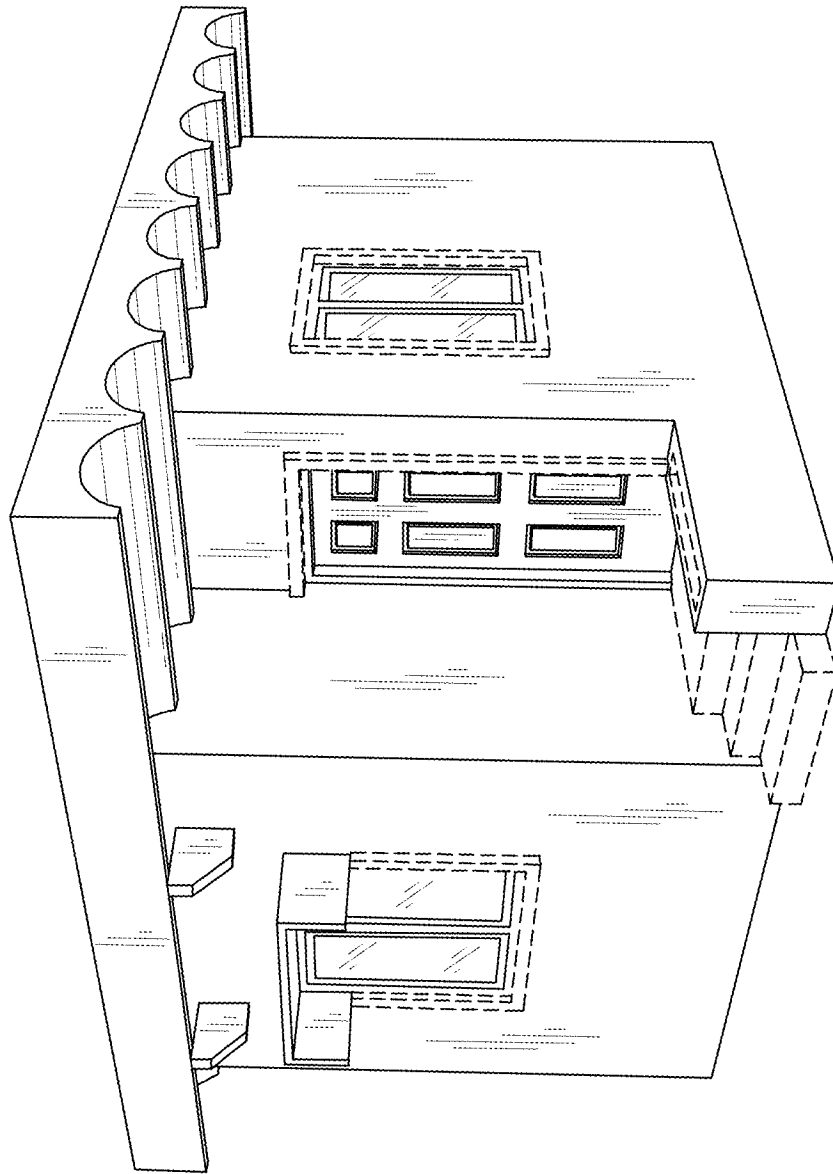
The ornamental design for a bungalow, substantially as shown and described.

**DESCRIPTION**

FIG. 1 is a front, left perspective view of a bungalow of the present invention;  
FIG. 2 is a front elevation view of FIG. 1;  
FIG. 3 is a left elevation view of FIG. 1;  
FIG. 4 is a rear elevation view of FIG. 1;  
FIG. 5 is a right elevation view of FIG. 1; and,  
FIG. 6 is a top plan view of FIG. 1.  
The broken lines depict portions of the bungalow which form no part of the claimed design.

**1 Claim, 6 Drawing Sheets**





**FIG. 1**

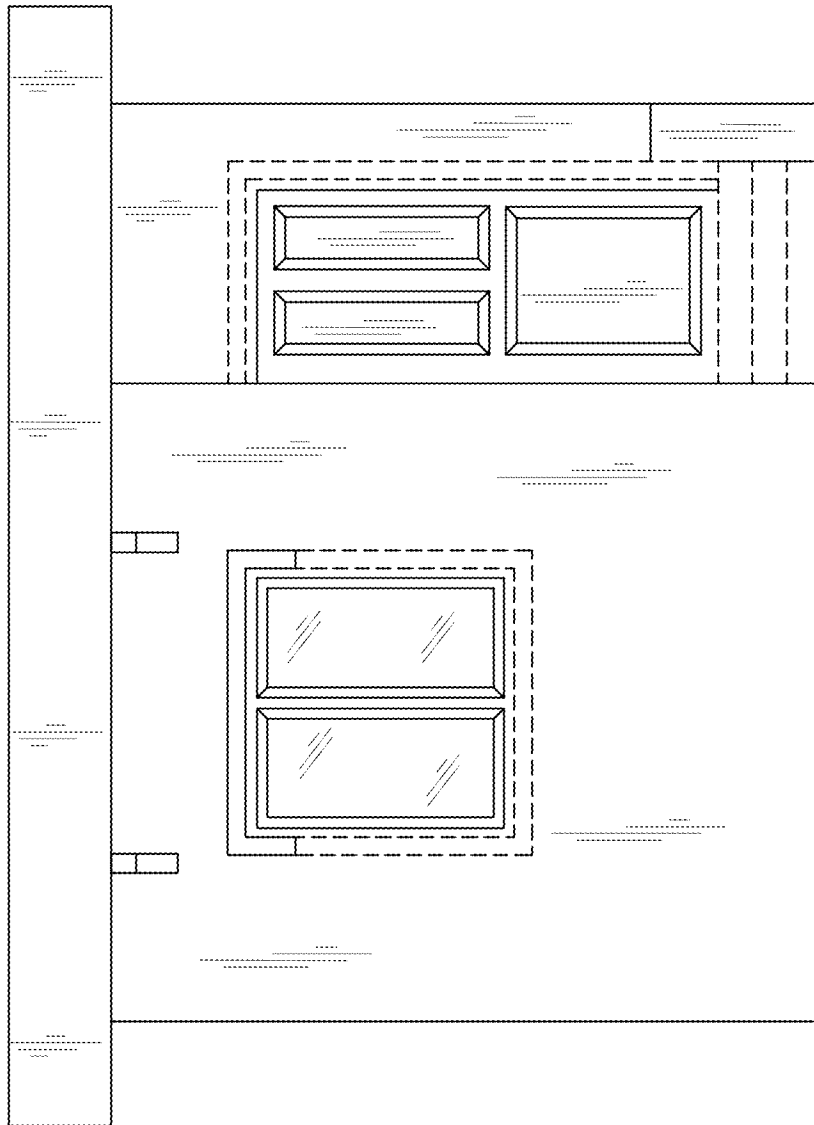


FIG. 2

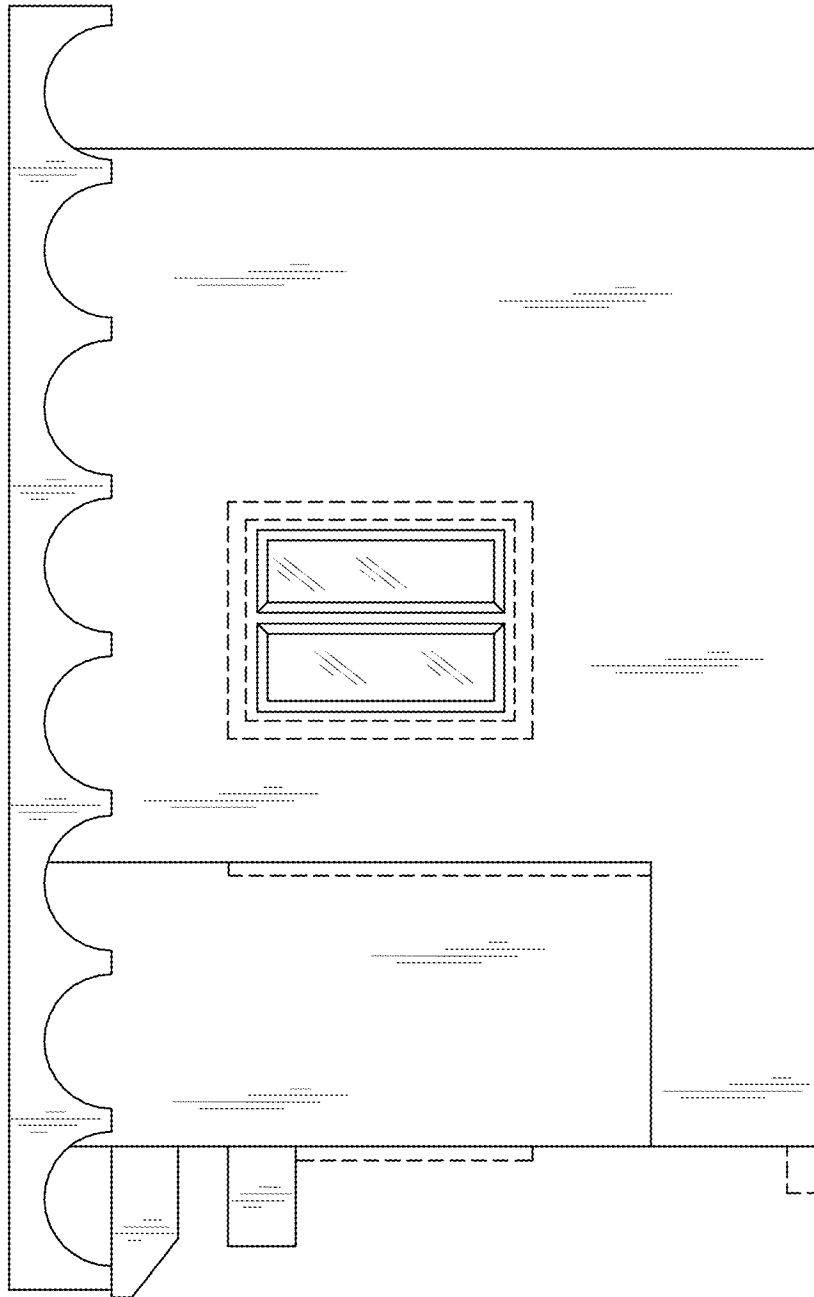
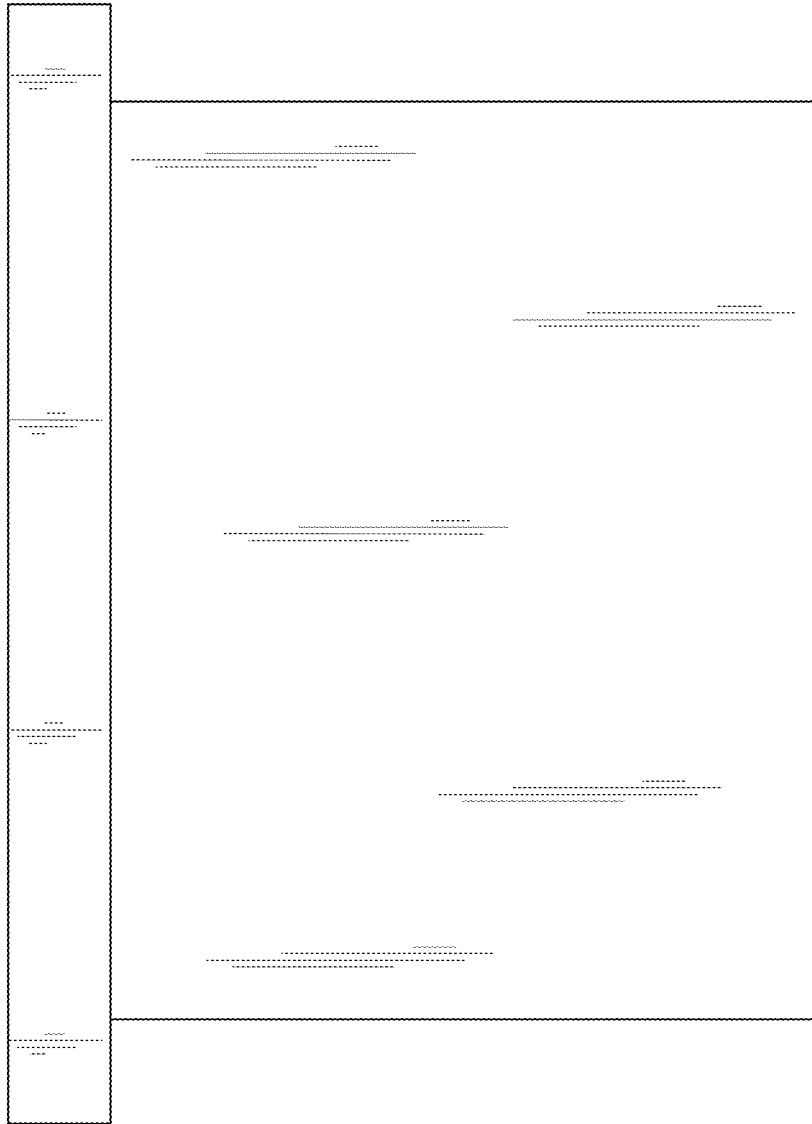


FIG. 3



**FIG. 4**

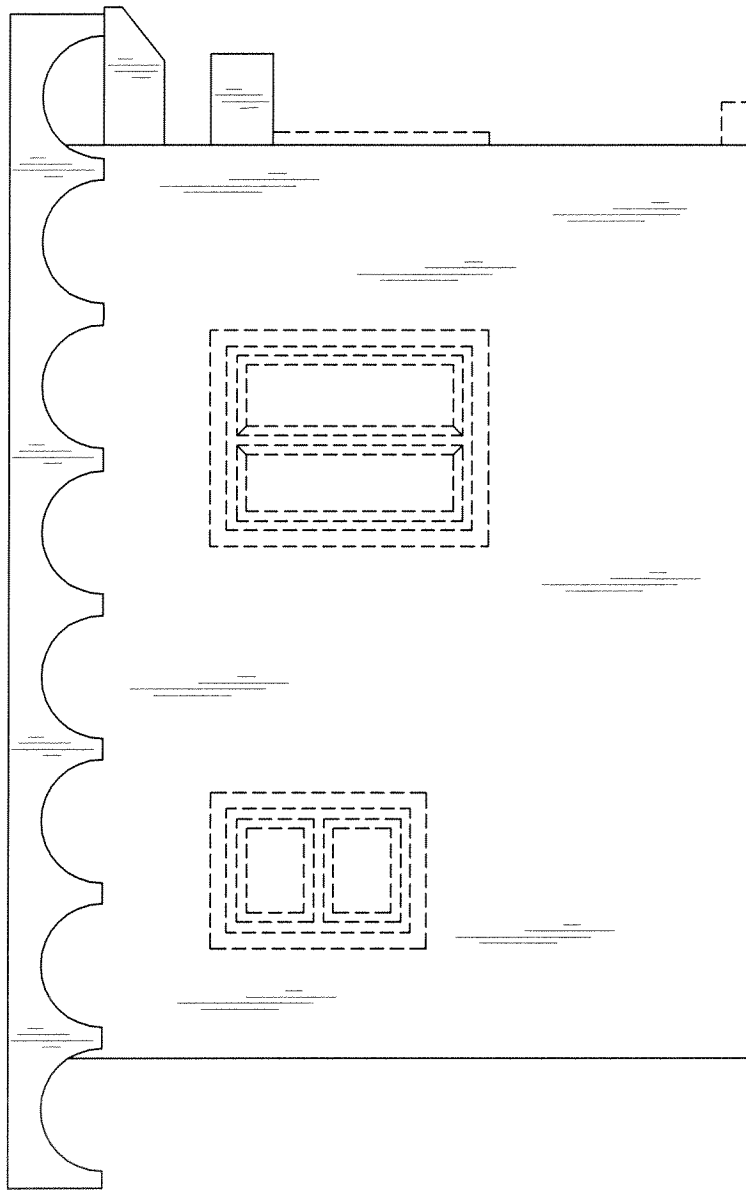
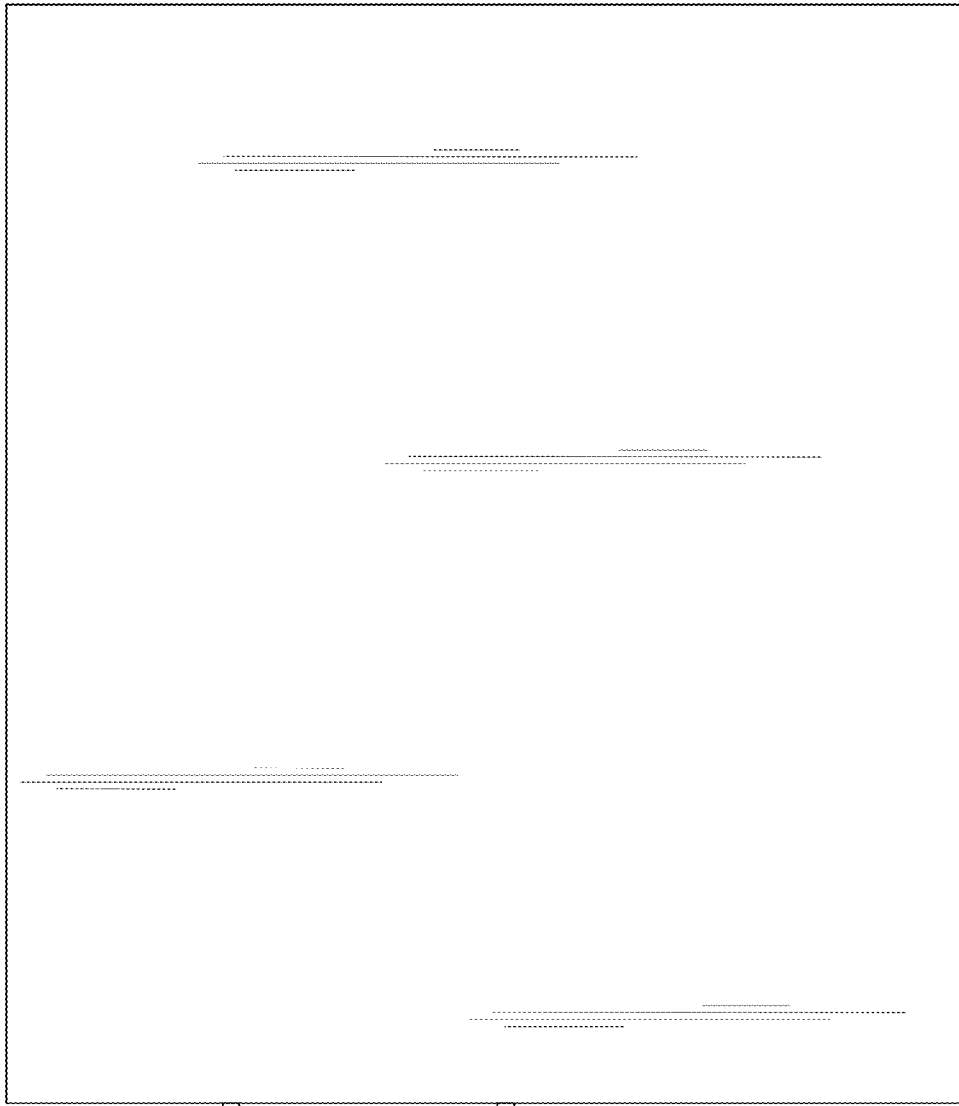


FIG. 5



**FIG. 6**